

BENCHMARK



BENCHMARK



Victoria Workbench

BENCHMARK

Materials:	Solid Timber / Solid Brass
Top:	Oak / Ash / Elm / American Black Walnut
Frame:	Ash Whitened Oil / Ash Graphite Oil
Cable Covers:	Brass / Patinated brass
Bespoke Options:	Integrated Power & Data / Lighting / Space Dividers / Timber / Size / Finish

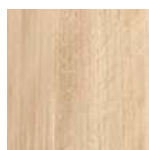
DIMENSIONS

2 Workspaces	1500 × 1500 × 750 mm
4 Workspaces	3000 × 1500 × 750 mm
6 Workspaces	4500 × 1500 × 750 mm

ADDITIONAL INFORMATION

Inset legs for higher density working. A central cable tray houses power and data cables. Solid brass covers work with cabling and monitor arms. Moveable risers enables optimal positioning for electrics. Optional solid brass space dividers separate individual workspaces. Custom power and data modules and integrated lighting available.

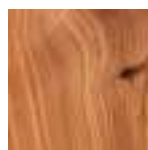
FINISHES



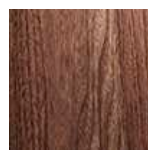
Oak Whitened Oil



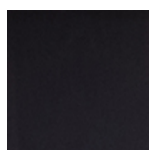
Ash Whitened Oil



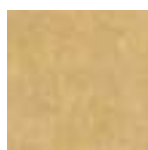
Elm Clear Oil



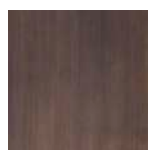
American Black Walnut - Clear Oil



Ash Graphite Oil



Brass



Patinated Brass

MAINTENANCE

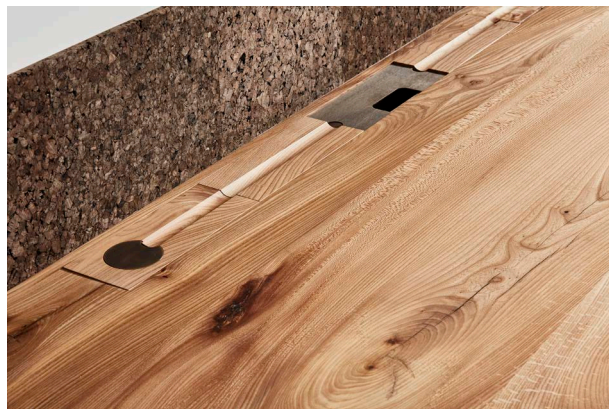
The Victoria range is finished in a hard wax polyx oil. This protects from stains and spillages whilst keeping the timber looking and feeling as natural as possible. Simply wipe with a damp cloth.



BENCHMARK



BENCHMARK



Victoria Sit-Stand Desk

BENCHMARK

Materials:	Solid Timber / Solid Brass / Cork
Top:	Oak / Ash / Elm / American Black Walnut / European Walnut
Frame:	Black / White
Cable/Grommet Covers:	Brass / Patinated brass
Bespoke Options:	Integrated Power & Data / Timber / Size / Finish / Leg Shape / Cable Tidy

DIMENSIONS

1800 × 900 mm
Height adjustment: From 69 cm to 119 cm
Maximum weight load: 100 kg

ADDITIONAL INFORMATION

A central cable tray houses power and data cables. Solid brass covers work with cabling and monitor arms. Custom power and data modules available. The magnetic upstand is covered in a choice of cork.

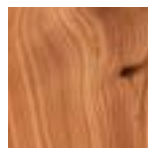
FINISHES



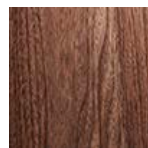
Oak Whitened Oil



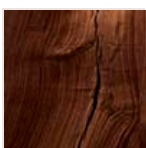
Ash Whitened Oil



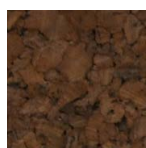
Elm Clear Oil



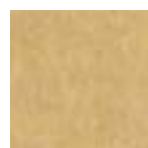
American Black Walnut - Clear Oil



European Walnut



Cork



Brass



Patinated Brass

MAINTENANCE

The Victoria range is finished in a hard wax polyx oil. This protects from stains and spillages whilst keeping the timber looking and feeling as natural as possible. Simply wipe with a damp cloth.



BENCHMARK



BENCHMARK



Victoria Executive Desk

BENCHMARK

Materials:	Solid Timber / Solid Brass
Top:	Oak / Ash / Elm / American Black Walnut / European Walnut
Frame:	Ash Whitened Oil / Ash Graphite Oil
Cable Covers:	Brass / Patinated brass
Bespoke Options:	Integrated Power & Data / Timber / Size / Finish

DIMENSIONS

2000 × 1000 × 750 mm
2400 × 1000 × 750 mm

ADDITIONAL INFORMATION

A central cable tray houses power and data cables. Solid brass covers work with cabling and monitor arms. Custom power and data modules available.

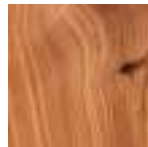
FINISHES



Oak Whitened Oil



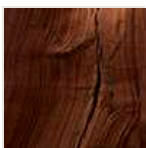
Ash Whitened Oil



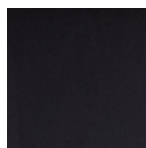
Elm Clear Oil



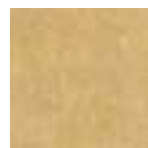
American Black Walnut - Clear Oil



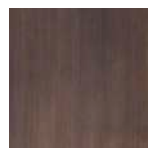
European Walnut



Ash Graphite Oil



Brass



Patinated Brass

MAINTENANCE

The Victoria range is finished in a hard wax polyx oil. This protects from stains and spillages whilst keeping the timber looking and feeling as natural as possible. Simply wipe with a damp cloth.



BENCHMARK



BENCHMARK



Victoria Elliptical Meeting Table

BENCHMARK

Materials:	Solid Timber / Solid Brass
Top:	Oak / Ash / Elm / American Black Walnut / European Walnut
Frame:	Ash Whitened Oil / Ash Graphite Oil
Cable Covers:	Brass / Patinated brass
Bespoke Options:	Integrated Power & Data / Timber / Size / Finish

DIMENSIONS

2400 × 1200 × 750	mm
3000 × 1500 × 750	mm

ADDITIONAL INFORMATION

A central cable tray houses power and data cables. Solid brass covers work with cabling. Custom power and data modules available.

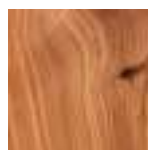
FINISHES



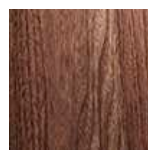
Oak Whitened Oil



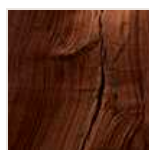
Ash Whitened Oil



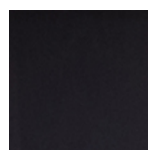
Elm Clear Oil



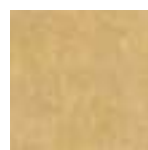
American Black Walnut - Clear Oil



European Walnut



Ash Graphite Oil



Brass



Patinated Brass

MAINTENANCE

The Victoria range is finished in a hard wax polyx oil. This protects from stains and spillages whilst keeping the timber looking and feeling as natural as possible. Simply wipe with a damp cloth.



BENCHMARK



BENCHMARK



Victoria High Table

BENCHMARK

Materials:	Solid Timber / Solid Brass
Top:	Oak / Ash / Elm / American Black Walnut
Frame:	Ash Whitened Oil / Ash Graphite Oil
Cable Covers:	Brass / Patinated brass
Bespoke Options:	Integrated Power & Data / Timber / Size / Finish

DIMENSIONS

2000 × 900 × 1050	mm
2400 × 900 × 1050	mm
4000 × 900 × 1050	mm
4800 × 900 × 1050	mm

ADDITIONAL INFORMATION

Suitable as a canteen table or hot desk with bespoke integrated power and data with brass covers.

FINISHES



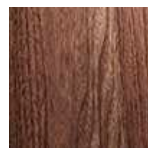
Oak Whitened Oil



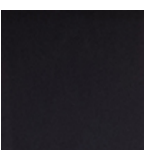
Ash Whitened Oil



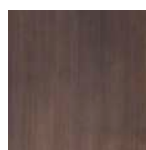
Elm Clear Oil



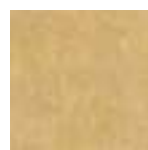
American Black Walnut - Clear Oil



Ash Graphite Oil



Patinated Brass



Brass

MAINTENANCE

The Victoria range is finished in a hard wax polyx oil. This protects from stains and spillages whilst keeping the timber looking and feeling as natural as possible. Simply wipe with a damp cloth.



BENCHMARK



BENCHMARK



Victoria Round Meeting Table

BENCHMARK

Materials:	Solid Timber / Solid Brass
Top:	Oak / Ash / Elm / American Black Walnut / European Walnut
Frame:	Ash Whitened Oil / Ash Graphite Oil
Cable Covers:	Brass / Patinated brass
Bespoke Options:	Integrated Power & Data / Timber / Size / Finish

DIMENSIONS

dia 1200 × 750 mm
dia 1500 × 750 mm
dia 1800 × 750 mm

ADDITIONAL INFORMATION

A central cable tray houses power and data cables. Solid brass covers work with cabling. Custom power and data modules available.

FINISHES



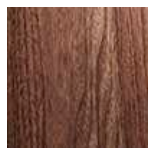
Oak Whitened Oil



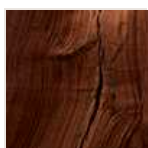
Ash Whitened Oil



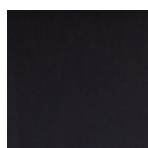
Elm Clear Oil



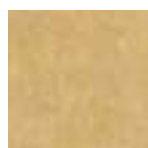
American Black Walnut - Clear Oil



European Walnut



Ash Graphite Oil



Brass



Patinated Brass

MAINTENANCE

The Victoria range is finished in a hard wax polyx oil. This protects from stains and spillages whilst keeping the timber looking and feeling as natural as possible. Simply wipe with a damp cloth.



BENCHMARK



BENCHMARK



Victoria Square & Rectangular Meeting Table

BENCHMARK

Materials:	Solid Timber / Solid Brass
Top:	Oak / Ash / Elm / American Black Walnut / European Walnut
Frame:	Ash Whitened Oil / Ash Graphite Oil
Cable Covers:	Brass / Patinated brass
Bespoke Options:	Integrated Power & Data / Timber / Size / Finish

DIMENSIONS

Square	1500 × 1500 × 750 mm
Rectangular	2400 × 1200 × 750 mm
Rectangular	3000 × 1500 × 750 mm
Rectangular*	4800 × 1200 × 750 mm
Rectangular*	6000 × 1500 × 750 mm

* made in two sections with central cable riser

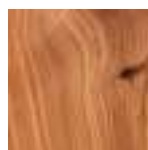
FINISHES



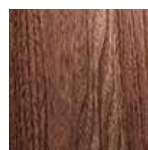
Oak Whitened Oil



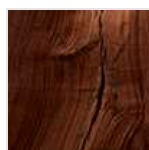
Ash Whitened Oil



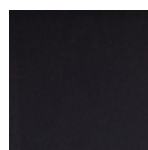
Elm Clear Oil



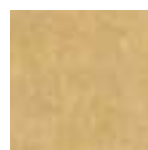
American Black Walnut - Clear Oil



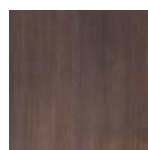
European Walnut



Ash Graphite Oil



Brass



Patinated Brass

ADDITIONAL INFORMATION

A central cable tray houses power and data cables. Solid brass covers work with cabling. Moveable risers on larger variants enables optimal positioning for electrics. Custom power and data modules available.

MAINTENANCE

The Victoria range is finished in a hard wax polyx oil. This protects from stains and spillages whilst keeping the timber looking and feeling as natural as possible. Simply wipe with a damp cloth.

