

BENCHMARK



BENCHMARK



Muse Sofa

SPACE COPENHAGEN

Materials: Oak / Ash
Upholstery: COM or COL
Variations: No tables / 1 table / 2 tables
Oil Finishes: Whitened / Aged Oak / Dark Grey
Bespoke Options: Size / Timber / Finish / U Shape / L Shape

FINISHES



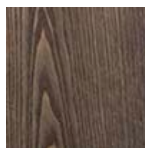
Oak Whitened Oil



Oak Aged Grey



Ash Whitened Oil



Ash Dark Grey Oil

DIMENSIONS

	No table / 1 table / 2 table
Small	1400/1700/2000 x 830 x 800 mm
Medium	2400/2850/3300 x 900 x 800 mm
Large	2700/3150/3600 x 900 x 800 mm

ADDITIONAL INFORMATION

The Muse sofa can be made in sizes to suit your space including L-Shaped and U-Shaped configurations. We can upholster in your own fabric or leather. Shown upholstered in Tibor fabric and Sorensen Leather.

MAINTENANCE

The frame is finished in a hard wax polyx oil. This protects from stains and spillages whilst keeping the timber looking and feeling as natural as possible. Simply wipe off with a damp cloth. For fabric and leather, please consult with the manufacturer.



BENCHMARK



BENCHMARK



Gleda High Chair

SPACE COPENHAGEN

Materials: Solid Oak / Solid Brass
Upholstery: Holland & Sherry Wool / Sorensen Leather / COM
Variations: Timber Arms / Brass Arms / Armless
Finishes: Ebonised / Aged Oak / Oak Whitened Oil

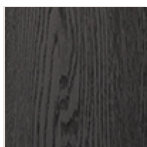
DIMENSIONS

Timber Arms	800 × 830 × 1000	mm
Metal Arms	840 × 830 × 1000	mm
Armless	610 × 830 × 1000	mm
Seat Height	430	mm

ADDITIONAL INFORMATION

The Gleda Chair is also available as a low and medium height chair. You can have the Gleda Chair upholstered in a fabric or leather of your choice. The High Chair requires 4m of fabric or 4.5m² of leather.

FINISHES



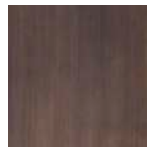
Ebonised Oak



Aged Oak



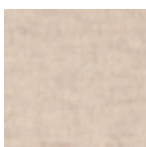
Oak Whitened Oil



Brass



Dark Grey Wool



Grey White Wool



Granite Leather



Marine Leather

MAINTENANCE

The Gleda range is all finished in a hard wax polyx oil. This protects from stains and spillages whilst keeping the timber looking and feeling as natural as possible. Simply wipe off with a damp cloth.



BENCHMARK



BENCHMARK



Gleda Low Chair

SPACE COPENHAGEN

Materials: Solid Oak / Solid Brass
Upholstery: Holland & Sherry Wool / Sorensen Leather / COM
Variations: Timber Arms / Brass Arms / Armless
Finishes: Ebonised / Aged Oak / Oak Whitened Oil

DIMENSIONS

Timber Arms	800 × 830 × 680	mm
Metal Arms	840 × 830 × 800	mm
Armless	610 × 830 × 680	mm
Seat Height	430	mm

ADDITIONAL INFORMATION

The Gleda Chair is also available as a medium and high backed chair. You can have the Gleda Chair upholstered in a fabric or leather of your choice. The Low Chair requires 3m of fabric or 3.5m² of leather.

FINISHES



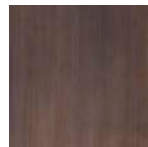
Ebonised Oak



Aged Oak



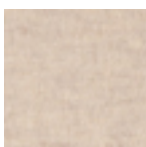
Oak Whitened Oil



Brass



Dark Grey Wool



Grey White Wool



Granite Leather



Marine Leather

MAINTENANCE

The Gleda range is finished with a hard wax polyx oil. This protects from stains and spillages whilst keeping the timber looking and feeling as natural as possible. Simply wipe off with a damp cloth.



BENCHMARK



BENCHMARK



Gleda Medium Chair

SPACE COPENHAGEN

Materials: Solid Oak / Solid Brass
Upholstery: Holland & Sherry Wool / Sorensen Leather / COM
Variations: Timber Arms / Brass Arms / Armless
Finishes: Ebonised / Aged Oak / Oak Whitened Oil

DIMENSIONS

Timber Arms	800 × 830 × 800	mm
Metal Arms	840 × 830 × 800	mm
Armless	610 × 830 × 800	mm
Seat Height	430	mm

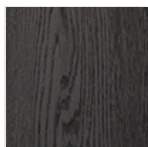
ADDITIONAL INFORMATION

The Gleda Chair is also available as a low and high backed chair. You can have the Gleda Chair upholstered in a fabric or leather of your choice. The Medium Chair requires 3m of fabric or 3.5m² of leather.

MAINTENANCE

The Gleda range is all finished in a hard wax polyx oil. This protects from stains and spillages whilst keeping the timber looking and feeling as natural as possible. Simply wipe off with a damp cloth.

FINISHES



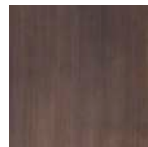
Ebonised Oak



Aged Oak



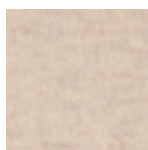
Oak Whitened Oil



Brass



Dark Grey Wool



Grey White Wool



Granite Leather



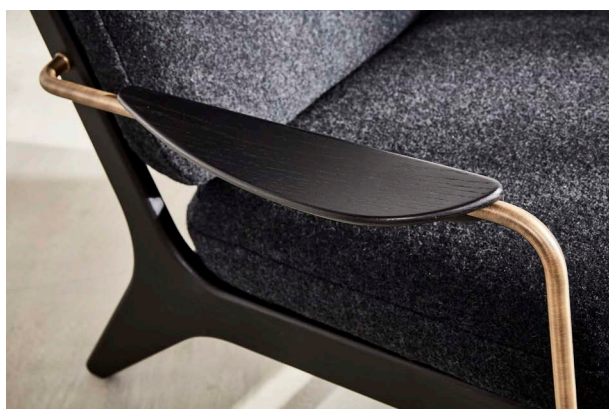
Marine Leather



BENCHMARK



BENCHMARK



Gleda Sofa

SPACE COPENHAGEN

Materials: Solid Oak / Solid Brass
Upholstery: Holland & Sherry Wool / Sorensen Leather / COM / COL
Variations: Timber Arms / Brass Arms / Armless
Finishes: Ebonised / Aged Oak / Oak Whitened Oil

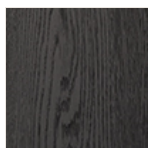
DIMENSIONS

Timber Arms	1390 × 830 × 800	mm
Metal Arms	1430 × 830 × 800	mm
Armless	1200 × 830 × 800	mm
Seat Height	430	mm

ADDITIONAL INFORMATION

The Gleda Sofa can be upholstered in a fabric or leather of your choice and requires 6m² of fabric or 7m² of leather. The Gleda Collection also includes easy chairs, dining chair and occasional tables.

FINISHES



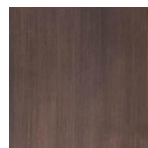
Ebonised Oak



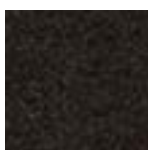
Aged Oak



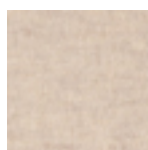
Oak Whitened Oil



Brass



Dark Grey Wool



Grey White Wool



Granite Leather



Marine Leather

MAINTENANCE

The Gleda Sofa is finished in a hard wax polyx oil. This protects from stains and spillages whilst keeping the timber looking and feeling as natural as possible. Simply wipe off with a damp cloth.



BENCHMARK



BENCHMARK



Gleda Dining Chair

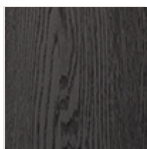
SPACE COPENHAGEN

Materials: Solid Oak / Solid Brass
Upholstery: Holland & Sherry Wool / Sorensen Leather / COM
Finishes: Ebonised / Aged Oak / Oak Whitened Oil

DIMENSIONS

530 x 620 x 830 mm
Seat Height 430 mm

FINISHES



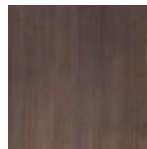
Ebonised Oak



Aged Oak



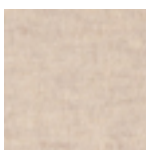
Oak Whitened Oil



Brass



Dark Grey Wool



Grey White Wool



Granite Leather



Marine Leather

ADDITIONAL INFORMATION

The Gleda Collection contains low, medium and high backed lounge chairs, as well as a coffee and side table. All available in the same selection of finishes and upholstery options.

MAINTENANCE

The Gleda range is finished in a hard wax polyx oil. This protects from stains and spillages whilst keeping the timber looking and feeling as natural as possible. Simply wipe off with a damp cloth.



BENCHMARK



BENCHMARK



Gleda Coffee & Side Table

SPACE COPENHAGEN

Materials: Solid Oak
Variations: Coffee Table / Side Table
Finishes: Ebonised / Aged Oak / Oak Whitened Oil

DIMENSIONS

Side Table 600 dia × 550 mm
Coffee Table 800 dia × 430 mm

FINISHES



Ebonised Oak



Aged Oak



Oak Whitened Oil

ADDITIONAL INFORMATION

The Gleda Collection contains low, medium and high backed lounge chairs, as well as dining chairs. All are available in the same selection of finishes and upholstery options.

MAINTENANCE

The Gleda Collection is all finished in a hard wax polyx oil. This protects from stains and spillages whilst keeping the timber looking and feeling as natural as possible. Simply wipe off with a damp cloth.

