

Sage Sit-Stand Workbench

DAVID ROCKWELL



Sage Sit-Stand Workbench

DAVID ROCKWELL



SPECIFICATION

T Materials:	Solid Sycamore / Solid Oak / Solid Walnut
Frame:	Solid Oak / Solid Walnut / Solid Ash
Riser:	Grey / Black
Pinboard:	Cork with Felt
Finishes:	Sycamore Whitenened Oil / Ash Grey Tinted Oil / Oak Whitenened Oil / Walnut Clear Oil
Options:	Bespoke Size / Integrated power and data / Illuminated Arch

DIMENSIONS

1600 x 1620 x 720 - 1220 mm

FINISHES



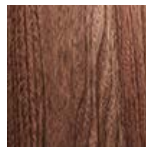
Sycamore Whitenened Oil



Ash Grey Tinted Oil



Oak Whitenened Oil



Walnut Clear Oil



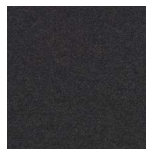
Divina MD 0613



Divina MD 0913



Divina MD 0433



Divina MD 0293

Finished with low VOC natural hard wax oil

Available in bespoke sizes & finishes

Power, data & USB A & C options with patinated copper surrounds.

Additional patinated copper coverplates with option for monitor arm cutout.

Sit-Stand mechanism in grey, white or black.

TRANSPARENT HEALTHY PRODUCTS

For complete transparency, our solid timber furniture has Red List Free and Declare labelling – an internationally recognised ingredients list for products that shows where it comes from, what is made of and where it goes at the end of its life. Red List Free means that it contains no harmful toxic chemicals and meets the standards for WELL certified buildings.



MADE WELL

For us, Making WELL is creating furniture that gives more than it takes, moving beyond just minimising our negative impacts and ensuring that we deliver a positive impact for both the environment and our health and wellbeing.

We believe that it is only when we consider the materials we use, the way we design, the quality of our making, how we manufacture and distribute, and what happens to our furniture at the end of its life, that we can create something that is truly Made WELL.

Our Made WELL Sustainability Report is available for download from our website or email us to request a

